

1

FACTORY PROFILE:

LOCATION:  
Karachi / Pakistan

PRODUCTION PROCESS:  
Dyeing, Finishing, Fabric Washing

NUMBER OF WORKERS:  
200

PRODUCTION VOLUME:  
1920 tons/ year

WASTE WATER TREATMENT PLANT:  
Discharge of water without treatment



01  
CHEMICAL  
MANAGEMENT



02  
CHEMICAL  
STORAGE



03  
CHEMICAL  
HANDLING



04  
CHEMICAL  
DISPOSAL

AUGUST  
2018

SEPTEMBER  
2018



OVERALL  
PERFORMANCE

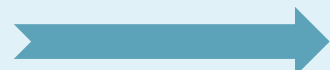
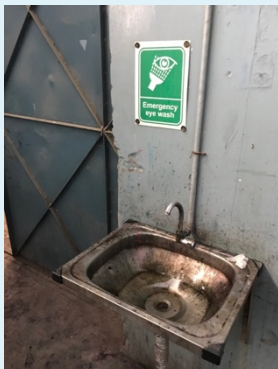


The factory has improved in the areas of chemical storage and chemical handling.

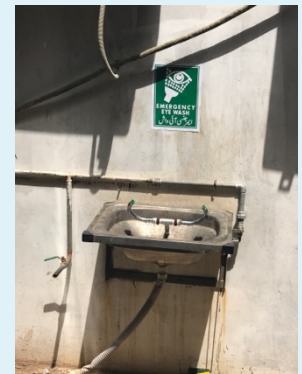
EXAMPLES



**Improvement of chemical handling/ health and safety:** Adequately equipped first aid boxes are available throughout the factory



**Improvement of chemical handling/ health and safety:** New eye wash stations have been installed at the relevant workplace



**Improvement of chemical handling/ health and safety:** Firefighting equipment is available throughout the factory





**Improvement labeling:**  
GHS labels are posted throughout the factory



## FURTHER IMPROVEMENTS



**Improved waste handling:**  
Separate and labeled waste bins are provided