

3

**FACTORY PROFILE:**



**LOCATION:**  
China

**PRODUCTION PROCESS:**  
Weaving, Dyeing, Finishing,  
Washing (Fabric)

**NUMBER OF WORKERS:**  
1,080

**PRODUCTION VOLUME:**  
7,920,000 t/y

**WASTE WATER TREATMENT PLANT:**  
On-Site (pre-treatment) & Off-site

*The factory has maintained its good status in the areas of chemical handling and chemical disposal*



01  
CHEMICAL  
MANAGEMENT



02  
CHEMICAL  
STORAGE



03  
CHEMICAL  
HANDLING



04  
CHEMICAL  
DISPOSAL

**OVERALL  
PERFORMANCE**

NOVEMBER  
2017

MARCH  
2018



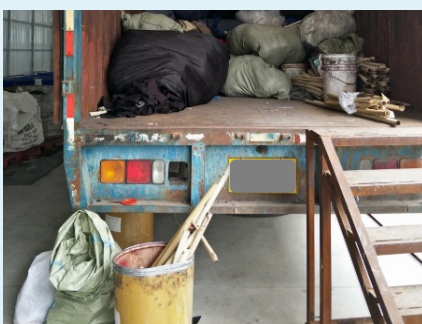
**EXAMPLES**



**Improvement of fire safety:**  
Fire extinguishers with  
correct pressure



**Improvement of fire safety:**  
Accessible fire fighting  
equipment



**Improvement of security:**  
Containers for solid waste  
are available

